

The versatile E Vault is designed to incorporate a full selection of controls, recirculation pumps, filtration, and water treatment systems. Top hatch ladder access and efficient interior layout make it easy to maintain.

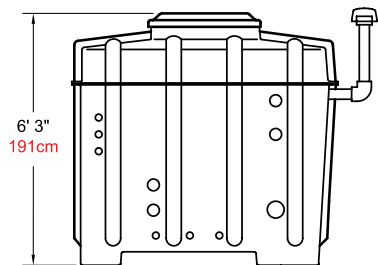
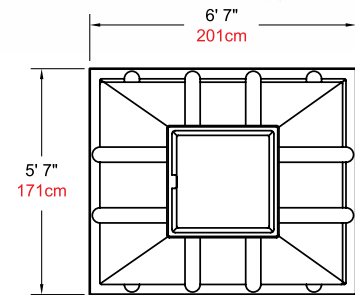
Standard Features:

- Heavy-duty FRP enclosure.
- Structurally engineered and certified for in-ground installation.
- Full electrical clearance per NEC Standards.
- Thermally protected pumps.
- Forced air ventilation system.
- Automatic sump pump.
- Interior heavy-duty light fixtures.
- OSHA approved fiberglass ladder.
- Non-skid rubber floor mat.
- Lockable lid with lock-open arm, stainless steel lock hasp, and stainless steel hinge.
- Stainless steel anchors and tie-down cables.
- Wall mounted maintenance procedures for all equipment.

Optional Features:

- Stainless steel floor door.
- Hatch extensions.
- Main pump strainers.
- Choice of 18" or 24" sand filter with multi-port valve or 50 to 300 square foot cartridge filter with spare filter element.
- 'Pop-up' UL Listed control panel for full system control.
- Pressure and vacuum gauges.
- 3/4" water fill station with solenoid valve, water hammer arrestor, and hose bib with hose.
- 1" - 2" water fill station with solenoid valve, pressure reducing valve, water hammer arrestor, and hose bib with hose.
- Fully automated water treatment systems.
- Silver ion water treatment system.
- Ozonation systems.
- Low pressure shut-off.
- Maintenance monitors and alarms.

Not all options are available in certain vault configurations. For equipment specification data, or configuration and design assistance, contact us at (512)392-1155 or email us at design@fountainpeople.com.



Filter:

Pump HP	Type	Tank Size	Max Filter Rate (GPM)	Max Filter Rate (LPM)
1/2	Sand	18"	30	132
3/4	Sand	24"	63	238
1/2	Cartridge	50SF	20	75
1/2	Cartridge	80SF	30	113
3/4	Cartridge	120SF	45	170
3/4	Cartridge	160SF	60	227
1	Cartridge	200SF	75	283
2	Cartridge	300SF	112	423

Data:

Model Number	Main Pump HP	Max GPM @ 40' Head	Max LPM @ 1.2 Bar	Electrical
PFV-E500	3	325	1,230	120/240V, 1Ø, 60 Hz 120/208V, 3Ø, 60 Hz 460V, 3Ø, 60 Hz
PFV-E750	5	450	1,703	
PFV-E1000	10	550	2,081	
PFV-E1500	15	750	2,839	



Story | Water | Light | Motion

fountain people®

Fountain People, Inc.
P.O. Box 807
San Marcos, TX 78666
T: 512.392.1155
F: 512.392.1154
www.fountainpeople.com

Catalog #	
Details	
Project	
Prepared by	
Date	